



The 12V DC powered RLB1-DP relay board from Tactical Technologies features a dual buffered, Double Pole Double Throw (DPDT) Relay and incorporates the following features:

- Input voltage 12 - 15V DC
- DPDT relay contacts, rated at 1 Amp @ 30V DC.
- Dual buffered input will trigger from 5 V or 0 V .
- Dimensions: 32L x 42W x 19H mm
- SMD Surface Mount Device Technology
- Relay contacts may be voltage free or jumpered to either + or - ve
- Also available in strips of 8 - please order RLB8-DP

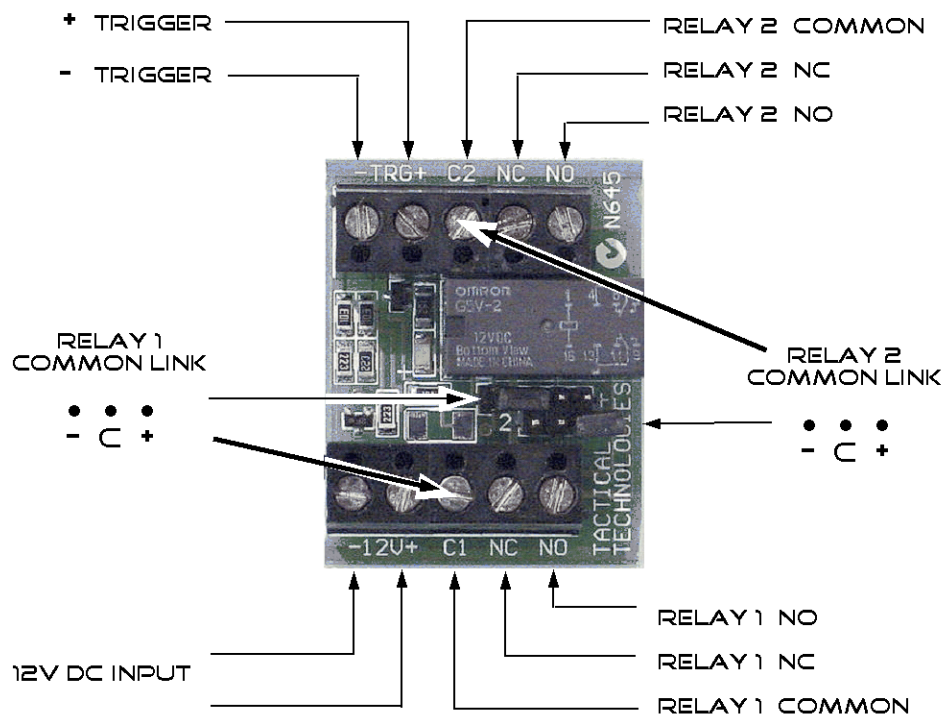
### WARRANTY STATEMENT

Tactical Technologies Pty Limited guarantees this product against defective parts and workmanship for a period of twelve (12) months from the date of purchase. If any defect appears during the warranty period return the goods to Tactical Technologies Pty Limited postage paid. The goods will be repaired and returned. Tactical Technologies Pty Limited assumes no liability for consequential or indirect damage and accepts no responsibility for repairing damage to products caused by misuse, careless handling, or where repairs have been made by others.

In the interest of ongoing products development Tactical Technologies Pty Limited reserves the right to vary or alter specifications without notice.

# 12 DC DPDT RELAY

# RLB1-DP



CONNECTOR LAYOUT - TYPICAL

TACTICAL TECHNOLOGIES PTY LTD, 5 BUTTERFIELD ST, BLACKTOWN NSW 2148

PH: (61-2) 8822-1888 FAX: (61-2) 8822-1899

SALES@TACTICAL-TECHNOLOGIES.COM.AU WWW.TACTICAL-TECHNOLOGIES.COM.AU